

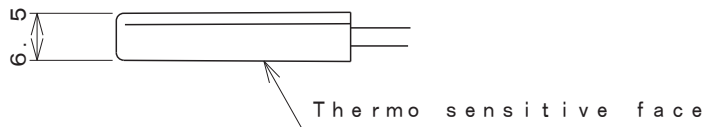
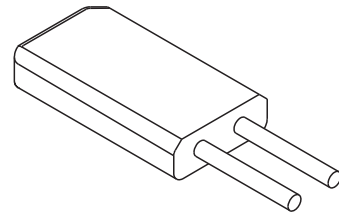
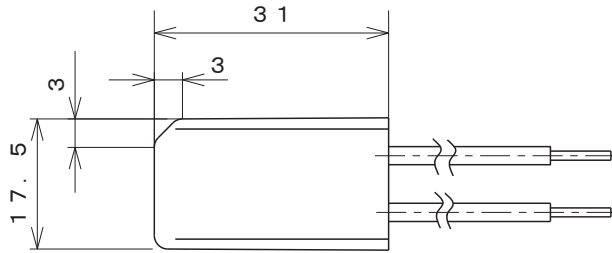


Thin Box
Water Proof Type

NEW

Type **MH4**

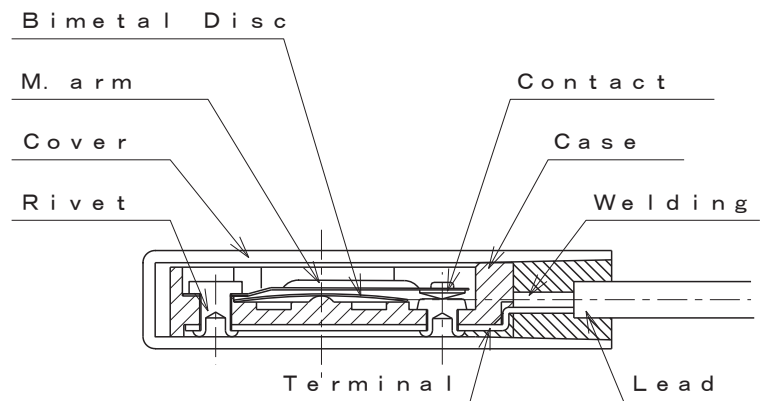
Dimensions



Materials of parts

Part	Material
Cap	PBT
Case	Phenolic resin
Spring	Beryllium Copper alloy
Rivet	Copper
Contacts	Silver
Leads	PVC

Structure



Specification

Item	Specification
1. Basic features	SPST Automatic reset
2. Operation	L : Contacts open on temperature rise F : Contacts close on temperature rise
3. Electrical rating	DC13.5V/7A
4. Calibration method	Hot & cold air circulation system
5. Temperature rating	Operating temperature Max. 70°C
6. Insulation resistance	Not less than 1,000MΩ/DC500V